

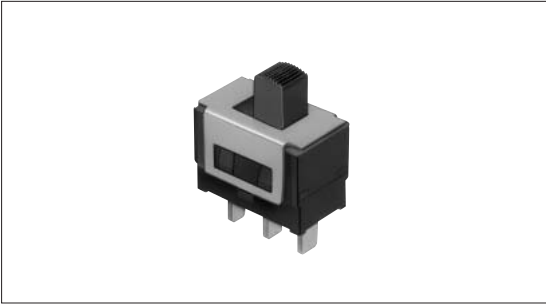
# Power Switch Slide Type

SDKT Series



A 2.2mm-travel slide type with soft and light switch feel.

- Detector
- Push
- Slide
- Rotary
- Encoders
- Power**
- Dual-in-line Package Type
- Multi Control Devices
- TACT Switch™
- Custom-Products



### Features

- No cadmium used in contacts.
- 2.2mm-travel.
- Smooth sliding feel.
- Complies with direct mounting onto PC board.

### Applications

- For power supply switches in air conditioners
- For home electric appliances and switching power supplies

### Ratings and Safety Standards

Items	Specifications
<b>Ratings</b>	6A 125V AC

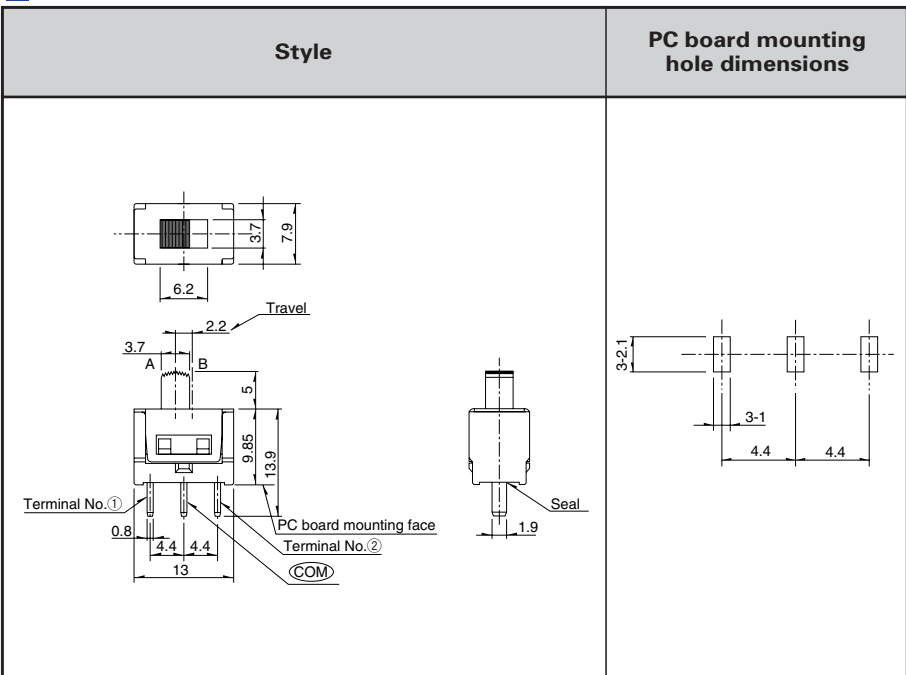
### Product Line

Circuit arrangement	Travel (mm)	Operating force	Mounting method	Minimum packing unit (pcs.)	Product No.
SPDT	2.2	0.98 to 3.92N	PC board	100	SDKTA20100

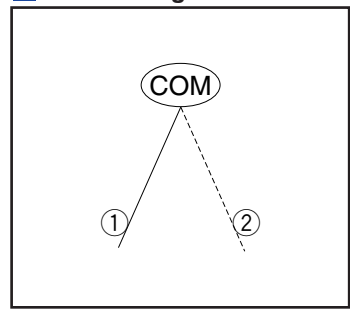
- Push Type
- Rocker Type
- Slide Type**

### Dimensions

Unit:mm



### Circuit Diagram



### Circuit Arrangement

A side	B side
COM-①	COM-②

Refer to P.267 for product specifications.

## Product Specifications

Items		Type	Slide			Rotary
		Series	SDKG SDKH	SDKP	SDKT	SDKZ
Operating temperature range		-10°C to +60°C				-10°C to +70°C
Rating		5A 250V AC			6A 125V AC	PS:16(6)A 250V AC,14(6)A 250V AC DC:0.1A 12V AC
Electrical performance	Contact resistance	50mΩ max. (SDKG) 100mΩ max. (SDKH)	100mΩ max.	10mΩ max.	100mΩ max. 1Ω max.	
	Insulation resistance	500MΩ min. (SDKG) 100MΩ min. (SDKH) 500V DC	500MΩ min. 500V DC	1,000MΩ min. 500V DC	500MΩ min. 500V DC 100MΩ min. 100V DC	
	Voltage proof	2,000V AC for 1minute			1,000V AC for 1minute	2000V AC for 1minute 100V AC for 1minute
Mechanical performance	Terminal strength		10N for 1minute			20N 5N
	Actuator strength	Operating direction	50N		30N	—
		Perpendicular direction	—		10N	30N
	Vibration		10 to 55 to 10Hz/min., the amplitude is 1.5mm for all the frequencies, in the 3 direction of X, Y and Z for 2 hours respectively			5 to 10 Hz/min., the amplitude is 1.5mm for all the frequencies, in the 3 direction of X, Y and Z for 10 hours respectively
	Resistance to soldering heat	Manual soldering	350±10°C, 3±0.5s			350±10°C, 3+ <sub>0</sub> s
Dip soldering		260±5°C, 10±1s				
Durability	Operating life		100cycles		20,000cycles	10,000cycles 30,000cycles
			Without load		Load : As ratings	
Environmental performance	Cold		-20±2°C for 96h			-40±2°C for 240h
	Dry heat		85±2°C for 96h			85±2°C for 240h
	Damp heat		40±2°C, 90 to 95%RH for 96h			40±2°C, 90 to 95%RH for 240h

Detector

Push

Slide

Rotary

Encoders

Power

Dual-in-line  
Package Type

Multi Control  
Devices

TACT Switch™

Custom-  
Products

Push  
Type

Rocker  
Type

Slide  
Type